

# FOR SALE

## COMMERCIAL - FACTORY (B2) 1,765SQFT (164SQM) / CALL FOR PRICE!

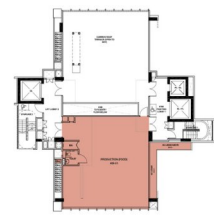
+65 9686 9943



Food Production

### 9TH STOREY

D 164 sqm | 1,765 sqft



UNIT NUMBER	UNIT TYPE	SPECIAL AREA CODE

## COMMERCIAL - FACTORY (B2)

33, KIM CHUAN DRIVE, SINGAPORE 537087

- LISTING ID: SGLD89214625
- TENURE: FREEHOLD
- TITLE: N/A
- SIZE BUILT-UP: 1,765SQFT (164SQM)
- SIZE LAND: 15,234SQFT (1,415SQM)
- NO. OF FLOORS: 9
- FLOOR/LEVEL: 9 - HIGH FLOOR
- PARKING SPACES: N/A
- LAYOUT TYPE: REGULAR
- FACING: N/A
- VIEWING: OTHER
- SELLING PRICE: **CALL FOR PRICE!**
- COMPLETION YEAR: 2023
- CONDITION: ORIGINAL CONDITION
- LISTING DATE: MAR 30, 2020

## CITRINE FOODLAND @ 33 KIM CHUAN

### INTERIOR FACILITIES

- Air-Conditioning
- Roof Terrace

### EXTERIOR FACILITIES

- 24 Hours Security
- Covered Car Park
- Dining / Restaurant

VISIT THIS PROPERTY AT: <https://www.rudypenthouses.com/property/SGLD89214625>



### RUDY TEDJA - HUTTONS ASIA PTE LTD

United Square #13-03, 101 Thomson Road  
Newton, Novena, D11, 307591, Singapore

+65 9686 9943  
WhatsApp Me

rudytedja888@yahoo.com

L3008899K  
R008960I

<https://www.rudypenthouses.com>



Scan QR Code

**Huttons**® Call for Viewing  
The Agency of Choice +65-96869943